

Introduction: Mr. Dennis stated his support for KSDE as Lead Agency for Part C, Infant Toddler programs.

Categorical Aid funding to the Tiny K networks is currently over 7 million dollars a year.

Anticipated increases for categorical aid per teacher is 06-07 \$23,000, 07-08 \$24,500 and for 08-09 \$26,000. This is an increase of \$1,500 per year per teacher for 3 years. **These yearly increases directly benefit Tiny K networks.**

Colleen Riley: Chairman Martinez - Good afternoon. Thank you for this opportunity to address you and the ICC committee. Making a decision about which agency should become the Lead Agency for Part C is a critical decision with its implications for eligible children and their families.

Many of you don't know me so I'd like to start out by giving you a brief summary of my background - I am new to Kansas, but not new to working with children and families. ****I have over 25 years in the field of special education - 14 years teaching experience as a special education teacher.**

****I was a local special education director in a medium sized district responsible for programs which included birth through 21.**

**After that I was an Assistant Director in a large district with similar responsibilities.

**For the 2 years prior to moving to KS, I was Principal of a year round elementary school with approximately 900 students – over 60 of whom were served in our preschool programs AND infant toddler programs. Our school served children in our community birth through 6th grade.

**Last spring when I knew I was moving to Kansas I began looking for employment. I interviewed for a position with this agency and was incredibly impressed by the quality of the people on the interview team and wanted to work with them. Fortunately, they wanted to work with me and here we are today....


**Margy, Gayle and I would like to share with you some information compiled by our team, that was in reality, put together by all of you through YEARS of successful collaboration.

Margy: I wanted to share a portion of a letter sent to the SICC from a doctoral student at one of our Kansas Universities. He says:

I wanted to send a note supporting a role for KSDE as lead agency for infant toddler services in Kansas.

For several decades now the fluctuating political nature of the board has been tempered by thoughtful leadership from the commissioner and other key individuals within KSDE. I think that is really one strength which KSDE brings to a leadership role in meeting the needs of all children with exceptionalities in Kansas—the people in charge of the offices at KSDE.

I would like to second the fact that KSDE has thoughtful leadership in Mr. Dennis and Colleen Riley, Patty Gray, and Kerry Ottlinger and the kind of leadership that would make KSDE a strong lead agency to administer the Part C Program!



Basic Assurances to Families and Service Providers

- v Part C Infant-Toddler services will remain an interagency and community responsibility
- v KSDE and KDHE will collaborate for a smooth transition during the lead agency transfer
- v There will be no change in the makeup of the local community networks which deliver the Part C services
- v KSDE will solicit input from stakeholders to develop transition and implementation plan

Kansas Education
December 17, 2006

Margy:

•Part C of IDEA has a maintenance of effort requirement and a non-supplanting provision. Part C moneys may not be used in place of financial resources that were previously used to support costs for system development and direct services. Part C money may be used only to expand, enhance, or fill gaps in existing services. State and local funding streams must be at the same or increased levels from the previous year's funding. KSDE is committed to facilitate the coordination of payment for early intervention services from Federal, State, local and private sources. A major objective of KSDE is to flow the maximum amount of Federal funds received at the state level through to local providers.

•The local lead agency and/or fiscal agent is to continue to be locally determined and administered. As in the past, because the lead agency would be KSDE does not mean that the local education agency has to be the lead agency. Services will not change at the local level. For instance, occupational therapy, physical therapy, and speech and language will continue as primary services and family support services will continue to be provided just as they are now. Each community has developed a system for administering the Part C services. These systems are working and infant and toddlers and families served through Tiny K networks are receiving quality services. This will not change with KSDE as lead agency.

•KDHE and KSDE will work together to assure that the transfer of the lead agency does not interfere with the provision of services to infants and toddlers and their families. KSDE recognizes KDHE for their positive contributions to the Part C program in Kansas. KSDE also recognizes each of the infant toddler networks for the quality services networks provide to children and families in Kansas. KSDE agrees with the SICC that the "family should be the most important focus in early intervention efforts, including assessment and intervention activities. Collaboration with the family is essential to meet the developmental needs of all young children." KSDE also believes, as does the SICC, that "administrative structures and funding mechanisms for services to young children should not require assigning specific diagnostic labels, because of the variable nature of young children's performance and the potential for rapid change in their developmental status."

•KSDE will ask the SICC to play a key role in working with KDHE and KSDE to develop priorities and timelines for this transition.

IDEA Part C Strong Fit at KSDE

- ▼ Every division and team is focused on positive outcomes for children and families
- ▼ Early childhood programs at KSDE—Parents as Teachers, at-risk preschool, school readiness, IDEA Part B (preschool), and K-3 (general and special education)

Kansas Education
December 17, 2006

Gayle:

We believe IDEA Part C is a strong fit at KSDE. As many of you know, KSDE administers programs that focus on children from birth through 21. We have many programs that specifically address the early childhood years, birth through age 9. For example:

Parents As Teachers

Four Year Old at-risk program

IDEA Part B (preschool)

Kindergarten through 3rd

And Teacher licensure which has an early childhood unified license birth to grade 3.

As a co-chair of the *Early Learning Guidelines and Standards*, I can attest to the fact that KSDE recognizes that :

-Children are born ready to learn

-Their families and caregivers are their first teachers.

-Learning is a lifelong activity and every environment is a learning environment.

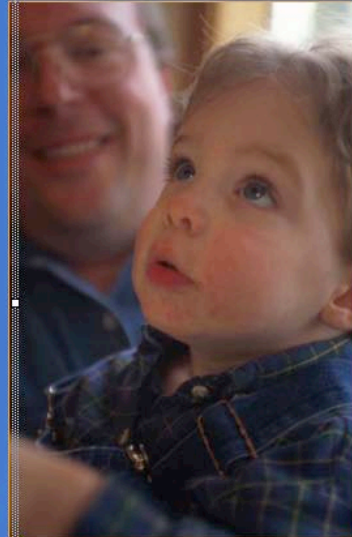
And finally, that

-Positive early experiences support positive educational outcomes.

The programs at KSDE reflect these statements.

IDEA Part C Strong Fit at KSDE

- ✓ All eligible children receive appropriate services—no waiting lists or fees
- ✓ Recognizing the strong connection between early intervention, parental involvement and improving ALL children's educational outcomes, the IDEA Part C program will always fit well at KSDE



Colleen: In KSDE programs, all eligible children with disabilities receive appropriate services depending on the program guidelines with no waiting lists or fees.

KSDE already supports Part C programs and has a history of supporting them:

KSDE provides over 7 million dollars for local Part C Networks and this will increase as Mr. Dennis explained earlier.

KSDE provides a portion of the funding for the ICC Coordinator.

KSDE provides \$25,000 to support Make-A Difference Information Network as part of the public awareness/child find system.

KSDE houses and supports the database for the Early Childhood Outcomes indicator for the State Performance Plan and is working with Part C and National Early Childhood Technical Assistance Center (NECTAC) on the transition indicator.

KSDE provides funding for the support of Part C inservice training through the State Improvement Grant (SIG).

KSDE contracts and partners with Families Together, Inc. to provide training, develop materials, and other collaboration efforts.

Recognizing the strong connection between early intervention, parental involvement and improving ALL children's educational outcomes...**the IDEA Part C program will always fit well at KSDE!**

One Law (IDEA)—One Lead Agency

▼ One lead agency will.....

- Provide support for a seamless system of services for children 0-5 and their families
- Provide system for more efficient use of staff

Kansas Education
December 11, 2002

Part B and Part C come under the umbrella of IDEA. Implementation of IDEA makes better sense if one agency implements one law. One agency implementing one law can increase efficiency, program effectiveness and provide support to local infant toddler networks to increase the quality of services to children and families. Examples of this would be:

One lead agency will provide support for a seamless system of services for children birth-5 and their families and provide a system for more efficient use of staff. The staff and legal office at KSDE are familiar with Special Education laws, regulations, policies, procedures and EDGAR requirements. Student Support Services personnel function as a team with specialists in mediation, due process, professional development, deaf-blind and low-incidence populations, monitoring, data collection and more.

One Law (IDEA)—One Lead Agency


✓ One lead agency will.....

- Provide more efficient management of previous parallel efforts (e.g., separate contracts for Families Together, KITS, etc.)



Kansas Education
December 17, 2006



Refer to slide.



One Law (IDEA)—One Lead Agency

v One lead agency will.....

- Provide a seamless system of professional development
- Increase the efficiency of data collection for accountability purposes
- Support focused advocacy for funding a birth through twenty-one system of service



Refer to slide.



One Law (IDEA)—One Lead Agency

✓ **One lead agency will.....**

- Utilize current fiscal system for forward funding of local programs
- Provide additional services, materials and resources to local networks per dollar spent



Kansas
Education
November 17, 2006

KSDE will utilize the current fiscal system for forward funding of local programs.

KSDE is committed to facilitate the coordination of payment for early intervention services from Federal, State, local and private sources.

KSDE will provide additional services, materials and resources to local networks per dollar spent. A major objective of KSDE is to flow the maximum amount of Federal funds received at the state level through to local providers.

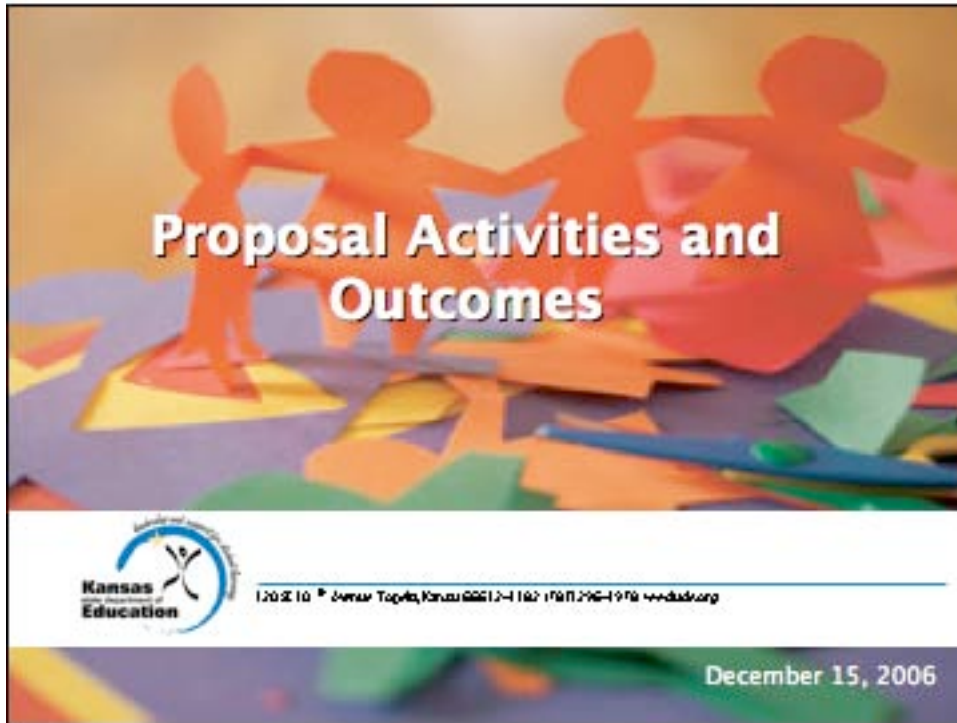
One example of additional materials that might be available is *The Guide to Special Education*. It is designed for parents to explain IDEA 2004. The guide was developed in collaboration with Families Together, Inc. and for very little extra cost could have included information to support families of children with disabilities from birth through 21 if the local Infant Toddler Network Coordinators decided this would be helpful for families they serve.

One lead agency will increase efficiency, program effectiveness and quality of services to children and families.

Kansas Education
December 17, 2006

One lead agency will increase efficiency, program effectiveness and quality of services to children and families.

The lead agency provides the support for local infant toddler networks to provide quality services to children and families. One lead agency can provide additional services, resources, and materials for less money.



Lead Agency Responsibilities in Federal law (Part C of IDEA) :


- A.The general administration and supervision of programs and activities receiving assistance under Part C.
- B. The monitoring of programs and activities used by the State to carry out Part C.
- C.The identification and coordination of all available resources within the State from Federal, State, local and private sources.
- D.The assignment of financial responsibility to the appropriate agencies.
- E.The development of procedures to ensure that services are provided to infants and toddlers with disabilities and their families under this part in a timely manner pending the resolution of any disputes among public agencies or service providers.
- F.The resolution of intra- and interagency disputes.
- G.The entry into formal interagency agreements that define the financial responsibility of each agency for paying for early intervention services (consistent with State law) and procedures for resolving disputes and that include all additional components necessary to ensure meaningful cooperation and coordination.



Proposal Activities and Outcomes

1. Develop and implement a plan for a smooth transition of lead agency responsibilities from KDHE to KSDE.
 - **Outcome:** The transition will maintain, at both the state and local levels, the implementation of a statewide, comprehensive, coordinated, multidisciplinary, interagency program of early intervention services for infants and toddlers with disabilities and their families.

KSDE will provide a plan for a smooth and responsible transition of lead agencies from KDHE to KSDE in order not to disrupt local services and to assure that the program is a statewide, comprehensive, coordinated, multidisciplinary, interagency program.



Proposal Activities and Outcomes

2. Provide the capacity and teaming necessary to support a Part C Coordinator and staff.
 - **Outcome:** The Part C Coordinator and staff will have the support necessary to provide needed services for local infant-toddler coordinators and the children and families they serve.


KSDE has an entire Student Support Services Team already in place. The addition of Part C staff and expertise will only make the team stronger as we learn from each other.



Proposal Activities and Outcomes

3. Meet with local Infant Toddler Coordinators in order to develop a plan to support ongoing communication.
 - **Outcome:** Implement a plan for ongoing communication and support between local Infant Toddler Coordinators and state Part C personnel.

KSDE must have a system for ongoing communication with local Infant Toddler Coordinators. There are many possibilities—quarterly meetings, newsletters, updated web site, but KSDE will need to know what local Infant Toddler Coordinators need and want.



Proposal Activities and Outcomes

4. Develop a 5 year plan for implementing lead agency responsibilities including outcomes and benchmarks, responsibilities and timelines with stakeholder input.
 - **Outcome:** The plan will provide guidance and accountability for all stakeholders involved in its implementation.

A 5 year plan will be developed and updated as needed but will be reviewed at least yearly. Input from the SICC and other stakeholders is critical for all elements of a lead agency's role to be considered and activities prioritized. Input from Infant Toddler Network Coordinators and other stakeholders in the development of the plan will be facilitated by personnel from the National Early Childhood Technical Assistance Center and Mountain Plains Regional Resource and Federal Center. The SICC and Infant Toddler Network Coordinators will be involved in development of the plan and provide ongoing guidance and accountability for implementation of the plan.



KSDE is ready, willing, and able to become the lead agency for Part C.

- ▼ We want you here.
- ▼ We can learn from each other.
- ▼ Together we can increase efficiency, program effectiveness and quality of services to children and families.

Kansas Education
December 17, 2006

**Chairman Martinez and Members of the Committee,
Thank you for taking the time to listen to our presentation. It is an exciting time to be in education and I am very proud to be part of this agency's commitment to early childhood programs. I feel we are very capable of providing the kind of leadership necessary for this important task.